



17 Shelley Court, 11 Mill Lane, Maidstone, Kent, ME14 1GT
£1,700 Per month



17 Shelley Court, 11 Mill Lane, Maidstone, Kent, ME14 1GT

£1,700 Per month

Welcome to this stunning new build apartment located in The Mill, Maidstone. This purpose-built residence offers a modern and comfortable living experience, perfect for those seeking a stylish home in a vibrant area. Spanning an impressive 792 square feet, the apartment features a well-designed layout that includes one spacious reception room, ideal for entertaining guests or enjoying quiet evenings at home.

The property boasts two generously sized bedrooms, providing ample space for relaxation and rest. With two bathrooms, convenience is at your fingertips, making it an excellent choice for families or professionals sharing the space.

Built in 2026, this apartment benefits from contemporary design and high-quality finishes, ensuring a fresh and inviting atmosphere. Additionally, the property includes parking for one vehicle, a valuable feature in this bustling location.

The Mill is a desirable area, offering a blend of urban convenience and natural beauty, with local amenities, parks, and transport links all within easy reach. This apartment is not just a place to live; it is a lifestyle choice that combines comfort, style, and practicality. Do not miss the opportunity to make this exceptional property your new home.

Description

A beautifully presented two double bedroom apartment situated in the sought-after Mill Development by Redrow. Offering contemporary living in an excellent central Maidstone location.

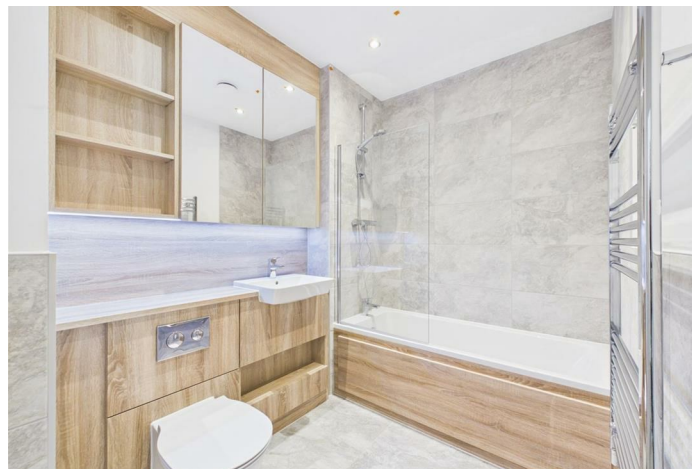
The property features a bright and spacious open-plan living area with a modern fitted kitchen complete with integrated appliances, two double bedrooms. The master has a built-in wardrobe and en-suite bathroom. With a second double bedroom and a stylish family bathroom.

Further benefits include a private balcony, secure entry system, lift access, an allocated parking space, visitor parking and an excellent EPC rating, helping to keep energy costs low.

Offered UNFURNISHED and available now.

Situation

Ideally positioned within easy reach of Maidstone town centre, residents can enjoy a wide range of shops, restaurants, cafés and leisure facilities, while excellent transport links, including Maidstone East station and nearby road connections, make this an ideal home for commuters.



Unfurnished

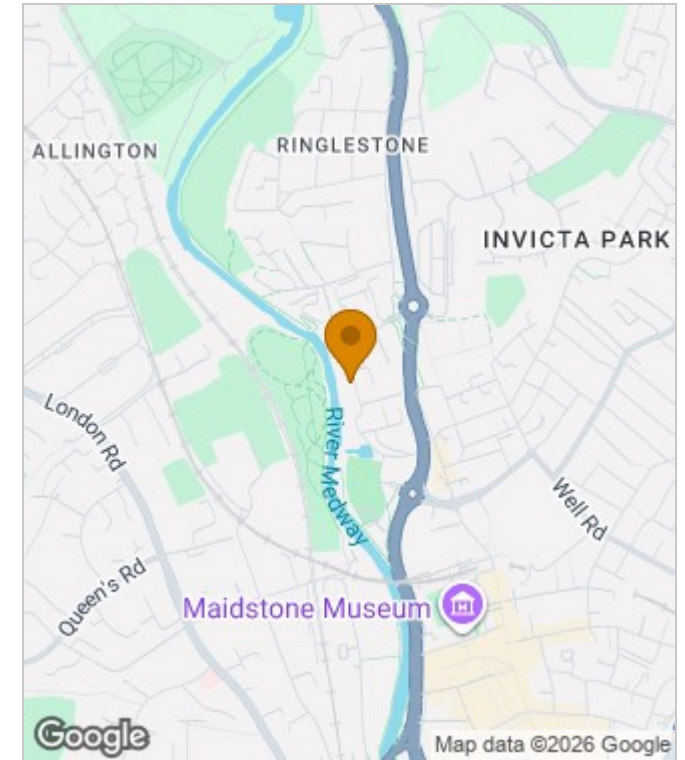
Council Tax Band:

Available: 1st July 2026

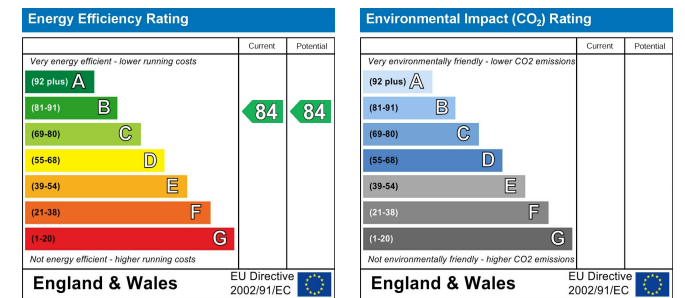
Floor Plans



Area Map



Energy Performance Graph



These particulars, whilst believed to be accurate are set out as a general outline only for guidance and do not constitute any part of an offer or contract. Intending purchasers should not rely on them as statements of representation of fact, but must satisfy themselves by inspection or otherwise as to their accuracy. No person in this firm's employment has the authority to make or give any representation or warranty in respect of the property.